

CERTIFICATE OF LOCATION OF GOVERNMENT CORNER

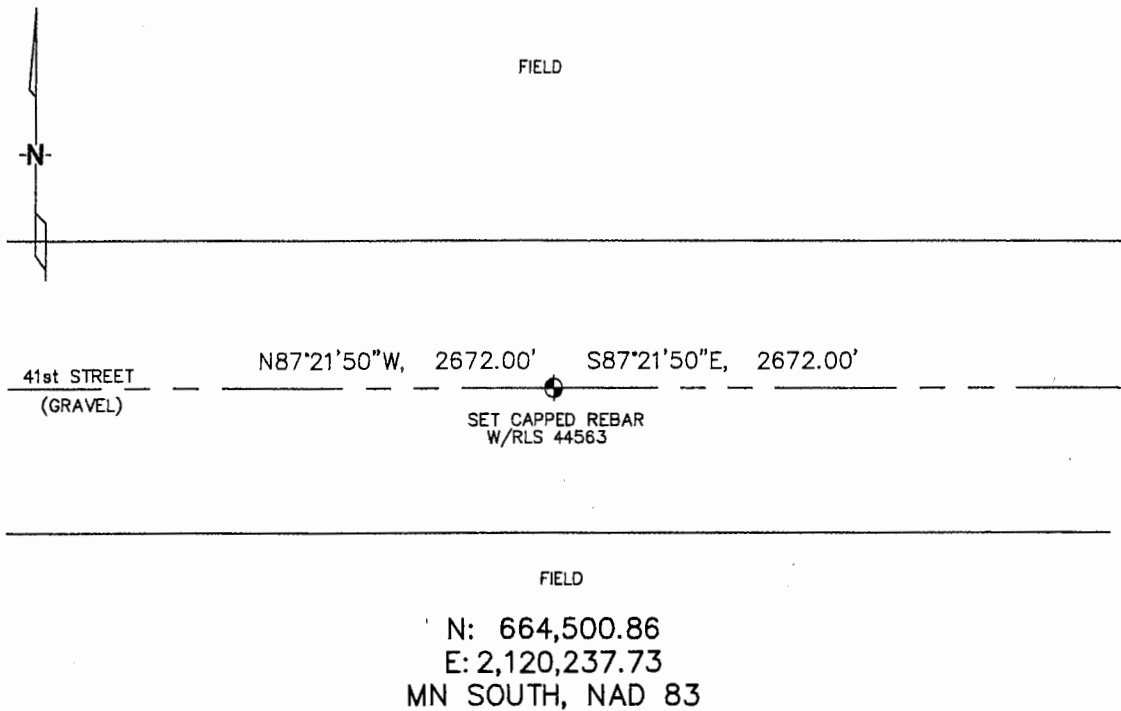
NORTH 1/4 Corner of Section 17, Township 105, Range 42 5TH P.M.

STATE OF MINNESOTA, County of MURRAY

At the corner location shown on the sketch :

- On _____ found _____
- left monument as found, lowered monument, removed monument (explain)
- On 3/15/2006 set A 5/8" REBAR WITH CAP: RLS 44563.

Sketch of reference ties



Statement of evidence relative to this corner location is on back page

I hereby certify that this document and the data contained herein was prepared by me or under my direct supervision.

Thomas V. Zeff 4/20/06
Thomas V. Zeff Date

Registration No. 44563

Land Surveyor, Professional Engineer

County Surveyor, County Engineer

OFFICE OF THE COUNTY RECORDER
County of _____

SEP 28 2006

I hereby certify that this document was filed in the Co. Recorders office at _____ .M. on the day of _____ A.D. , 20

County Recorder James V. Johnson
By _____ , Deputy

DOCUMENT NO. _____

STATEMENT OF EVIDENCE:

NORTH 1/4 CORNER, SECTION 17, T. 105 N., R. 42 W.,
MURRAY COUNTY, MINNESOTA

- 1861 D.W. Wellman & S.S. Smoot, US. Deputy Surveyors, monumented corner.
- 4/977 Murray Co. found nothing; dug huge hole.
- 3/15/2006 Ulteig Engineers, Inc., Survey Crew, Brian Payne Party Chief, found nothing. Set a 5/8" rebar with cap: RLS 44563.
Ties: E-2672.00' to NE corner, Section 17;
W-2672.00' to NW corner, Section 17.